

**BRM3™**

**bandag**

**15% BETTER TRACTION  
IN WET CONDITIONS  
THAN MICHELIN XZUS PC\***

**BE A HERO.  
CHOOSE A HERO.**

**bandag**

**BRM3™**

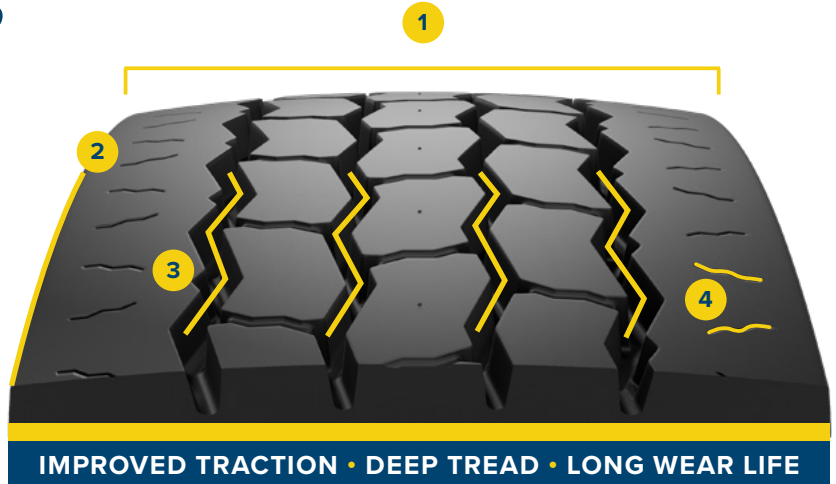
**IDEAL FOR REFUSE FLEETS STRIVING TO  
LOWER THEIR TIRE COST PER MILE THROUGH  
LONG WEAR AND DURABILITY.**

\*BRM3 WGI: 1.22 VS XZUS WGI: 1.03. 15.6% BRM3 ADVANTAGE CONDUCTED SAME DAY BACK-TO-BACK.

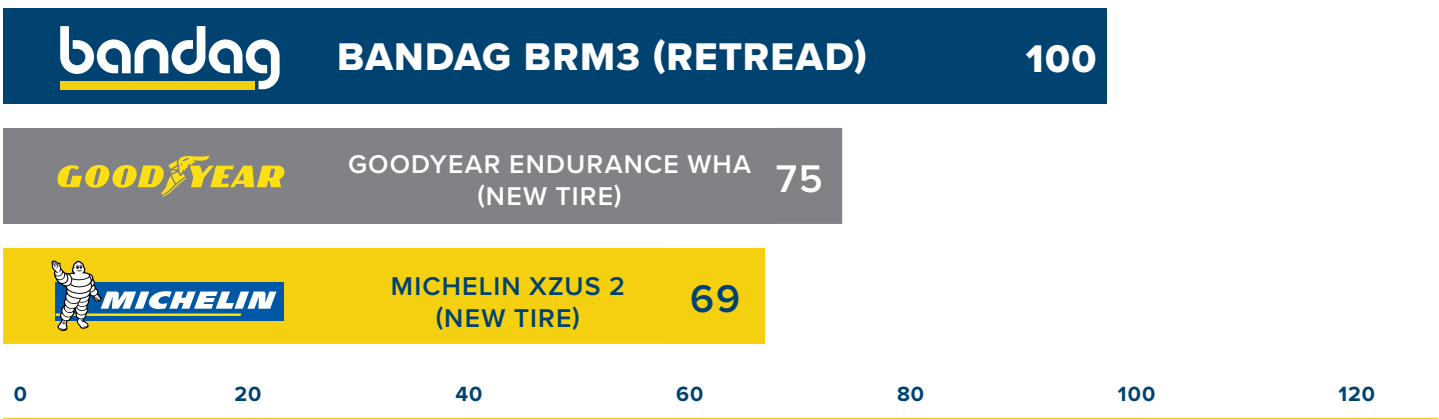
**BANDAG'S BRM3 IS ENGINEERED TO BE A MIXED-SERVICE, ALL-POSITION TIRE. IDEAL FOR REFUSE FLEETS STRIVING TO LOWER THEIR TIRE COST PER MILE THROUGH LONG WEAR AND DURABILITY.**

## DESIGN BENEFITS

- 1 PROPRIETARY HIGH SCRUB RESISTANT COMPOUND**  
 Contributes to long service life
- 2 ROBUST SHOULDERS**  
 Help resist damage caused by frequent twisting and turning often found in refuse applications
- 3 HIGH CENTER VOID**  
 Enhances stopping traction on wet roads
- 4 SHOULDER SIPES**  
 Contribute to a strong grip on wet roads



### RELATIVE WEAR OUT IN WASTE APPLICATION



*\*WASTE SEGMENT RESULTS FROM 1 LARGE FLEET IN CHICAGO (2017)*

FOR MORE INFORMATION ABOUT BANDAG RETREADS, PLEASE VISIT [BANDAG.COM](http://BANDAG.COM).