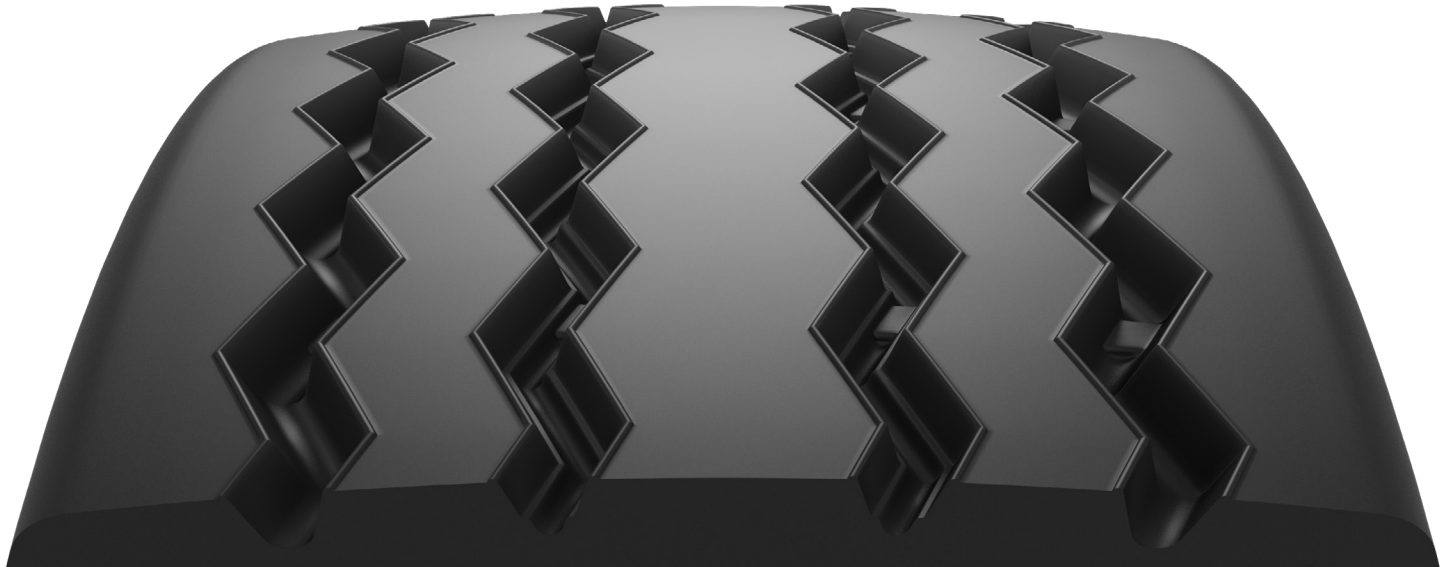




ECL-SST™

On/Off Highway Trailer Position

An on/off highway trailer tread engineered to deliver long wear life on multiple surfaces



Long Wear • Strong Shoulder • On/Off Road

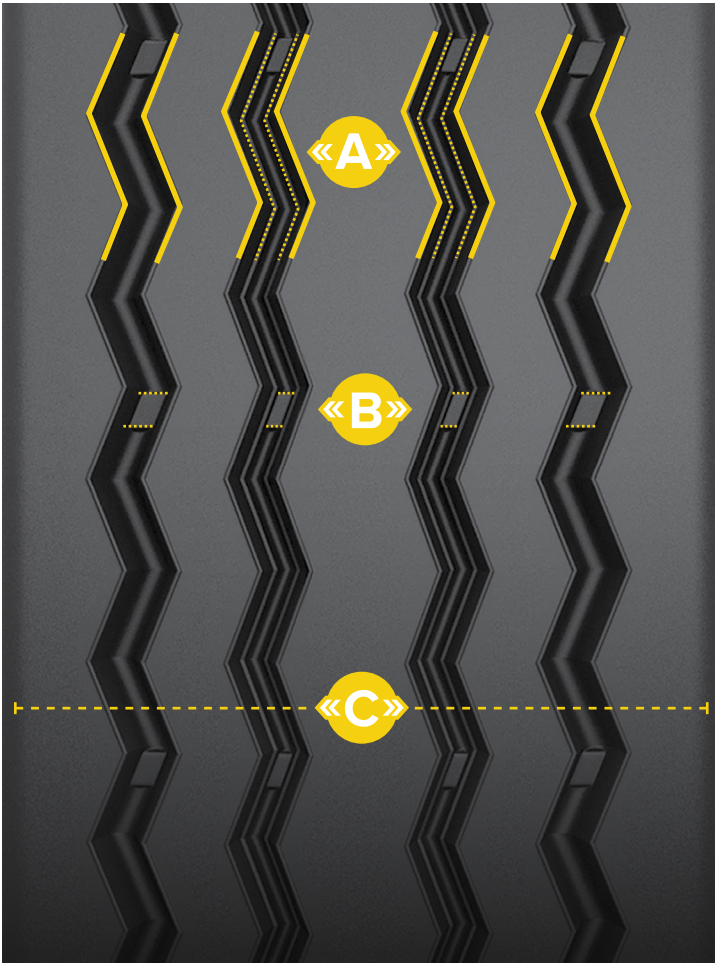


THE FEATURES RUN DEEP

The Bandag ECL SST on/off highway trailer tread is ideal for heavy load spread-axle or multi-axle fleets. ECL SST is part of Bandag's popular Eclipse platform which allows the tread to wrap around the tires shoulder to provide additional support when lateral stresses are applied. The ECL SST tread design is engineered to resist stone retention through optimized groove shapes to assist with extending the life of your casing. Bandag's specialized tread compound resist cutting and chipping which gives you piece of mind while driving in on and off-road environments.



ECL-SST™ Design Benefits



- A** **Optimized Groove Design**
to reduce stone drilling
- B** **ECL Platform**
for shoulder support
- C** **Optimized Tread Compound**
for on/off road applications

Ideal for on/off road and heavy load spread-axle or multi-axle fleets. Handles the tortuous routes of tough applications.



Build your fleet for better with Bandag. When you partner with Bandag, you'll get more miles out of less rubber. It's better for business, better for the environment and better for local economies.

For more information about Bandag retreads, please visit bandag.com.